



ROCKJUMPER

Worldwide Birding Adventures



American Birding®

ASSOCIATION



Bulwer's Pheasant by Glen Valentine

MALAYSIA & BORNEO

Borneo 'Chickens' and Other Rainforest Specialities

6th to 12th September 2024 (7 days)

Overview & Map. 2

Birding Sites in Detail. 3

Important Information 6

Arrival & Departure Details. . . . 7

OVERVIEW & MAP

For those wishing to extend their visit to Borneo, look no further than our custom 'chickens' tour. Over the course of a week, we will cover several other key sites on the island including the Trusmadi Highlands, Telupid, Sepilok and the Kinabatangan River and target some of Borneo's most sought-after birds. Top among these are several legendary 'chickens' including the Great Argus, Bulwer's Pheasant, Bornean Crested Fireback, Crimson-headed Partridge, and the rarely seen Bornean Peacock Pheasant. As if this wasn't enough, it is also one of the best countries in Asia to enjoy rainforest mammals and we can expect some incredible creatures, including added chances for Orangutan, several species of Gibbon, Mouse-Deers and if we are lucky, Leopard Cat! Join us for what is sure to be an awesome, exotic blend of fabulous birds, mammals, and amazing scenery!

Day 1	Kota Kinabalu to Trusmadi Highlands
Day 2	Full day birding the Trusmadi Highlands
Day 3	Trusmadi Highlands to Rana
Day 4	Rana and visit Telupid
Day 5	Transfer to Sepilok, and onward to Kinabatangan River via the Gomantong Caves (<i>subject to reopening</i>)
Day 6	Kinabatangan River
Day 7	Kinabatangan River to Kota Kinabalu via Lahad Datu



BIRDING SITES IN DETAIL

KOTA KINABALU AREA

A newly discovered species in the Kota Kinabalu area is the extremely range-restricted and scarce Malaysian Plover. If we still need this species, we will be sure to stop in at the site where a pair of these much sought-after plovers have been residing for the past few years.

MOUNT TRUSMADI

We'll use 4x4 vehicles to drive up to a remote camp on Mount Trusmadi. Initially built for entomologists, the camp is now also used by birders and those intrepid mountaineers wishing to summit Mount Trusmadi. The camp has a season-high record of 5000 different species of insects!

Our focus here will be on pheasants, specifically some of the most rarely observed, mythical species; Crested Partridge, Bulwer's Pheasant and Great Argus. We'll also time to search for other endemics such as Bornean Banded Pitta and Dayak Blue Flycatcher as well as the shy Chestnut-capped Thrush.

A strong supporting cast of Chestnut-necklaced Partridge, Brown Fulvetta, Helmeted, Wreathed and Rhinoceros Hornbills, White-crowned Shama, Mountain, Bornean and Golden-whiskered Barbets, Hill Blue Flycatcher, Temminck's Sunbird, Bornean Bulbul Rufous-fronted Babbler, Chestnut-sided Scimitar-Babbler, Chestnut-breasted Malkoha, Spotted Fantail, Bornean Leafbird, Orange-bellied and Yellow-rumped Flowerpeckers, Maroon-breasted Philentoma, Bornean Treepie, Sunda Bush Warbler and Penan Bulbul will keep us entertained.

In the evening we'll search for Barred Eagle-Owl, Malaysian Eared Nightjar and perhaps Sunda Owlet.

BORNEAN PEACOCK-PHEASANT SITE

Most of our day will be dedicated to finding the mythical Bornean Peacock-Pheasant. From the trail head, we'll walk for around an hour on an easy trail to a purpose-built hide from where we'll wait for our quarry to put in an appearance. We also have excellent chances for Crested Fireback, Bornean Banded Pitta, Raffle's Malkoha, Diard's Trogon, Rufous-winged Philentoma and Rufous-tailed Shama.

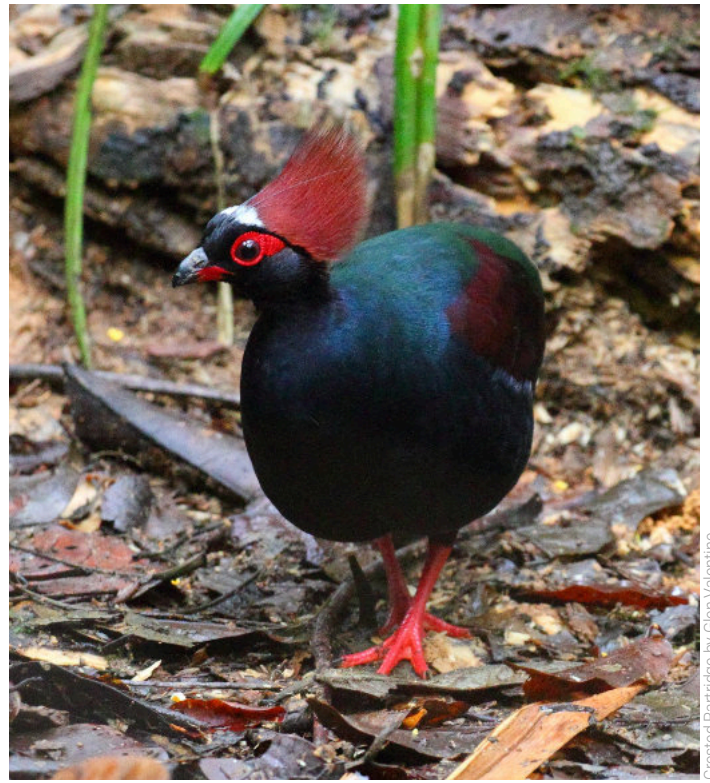


Great Argus by Glen Valentine

SEPILOK

We will walk the trails in search of a number of lowland species such as Scarlet-rumped Trogon, Rufous-collared Kingfisher, Chestnut-rumped Babbler and Oriental Dwarf Kingfisher. We will also spend time in elevated bird hides/towers. Here, one is level with the canopy and offers a good vantage point to look for raptors such as Oriental Honey Buzzard, Crested Serpent Eagle, Wallace's Hawk-Eagle, Brahminy Kite and Crested Goshawk. Other possibilities may include Cinnamon-headed (Green), Pink-necked (Green) and Thick-billed (Green) Pigeons, Long-tailed Parakeet, Blue-crowned Hanging Parrot, Silver-rumped Spinetail, Bushy-crested, Wreathed and Rhinoceros Hornbills, Great Slaty and several species other species of woodpeckers and barbets. If we are very lucky, we may find the rare Bornean Bristlehead which has been recorded here on a regular basis.

A session of owling may turn up Bornean Wood Owl and Oriental Bay Owl, whilst careful scanning may reveal a roosting Oriental Dwarf Kingfisher.



Crested Partridge by Glen Valentine



Proboscis Monkey by Nigel Redman

GOMONTONG CAVES

The entrance road to the caves cuts through some beautiful and pristine lowland rainforest where we will spend the early morning searching for any lowland species we may still need. These could include the likes of some of Borneo's trickier species such as White-fronted Falconet, Black-crowned, Bornean Banded and very rare Giant Pittas, Black-throated Wren-Babbler and Moustached Hawk-Cuckoo, as well as more regular but sometimes elusive species like Black-throated Babbler, Oriental Dwarf Kingfisher (the race here sometimes split as Rufous-backed Dwarf Kingfisher), Little Green Pigeon and Puff-backed Bulbul.

In the late afternoon we will make our way a short distance inside these huge caves where we may observe the bird's nest collectors harvesting old nests of Edible-nest and Black-nest Swiftlets for bird-nest soup. These fearless collectors climb high onto the cave ledges using flimsy rope ladders, an amazing feat indeed. The other two species of nesting swiftlets we hope to see are Mossy-nest and Glossy Swiftlets. Thereafter we will wait outside the caves for the mass bat exodus. There is an estimated two million bats (mainly made up of three species: the Wrinkle-lipped Free-tailed Bat, Large-eared (Philippine) Horseshoe Bat and Fawn Leaf-nosed Bat but as many as 27 species have been recorded!) and a million swiftlets make their home. Here several raptors including Bat Hawk, Peregrine Falcon, White-bellied Sea Eagle, Brahminy Kite and Wallace's and Rufous-bellied Hawk-Eagles usually join in for the feast.



Bornean Peacock-pheasant by Glen Valentine

KINABATANGAN RIVER

Superb rainforest birding is to be had along the Kinabatangan River. The surrounding area has unfortunately been reduced to endless tracts of commercial Oil Palm plantations with the result that nearly all the region's wildlife has been forced into a narrow strip of forest along the river. The concentration of wildlife here is, however, phenomenal and we will spend most of our time birding on productive boat trips on the main Kinabatangan River and its adjacent tributaries. These boat trips are simply amazing, allowing one to approach both birds and mammals at close range. Some of the wildlife we are likely to encounter on these trips include the rare Storm's Stork, Lesser Adjutant, Grey-headed and Lesser Fish Eagles, Oriental Darter, Blue-eared and Stork-billed Kingfishers, Blue-throated Bee-eater, Wrinkled, Black and Rhinoceros Hornbills, Silvered Langur, Long-tailed Macaque and the bizarre Proboscis Monkey. If we are fortunate, we may encounter some of the Kinabatangan's rarer inhabitants such as Helmeted and White-crested Hornbills, White-fronted Falconet, Wallace's Hawk-Eagle, Jerdon's Baza, Moustached Hawk-Cuckoo, Long-tailed Parakeet, the very rare and until recently mythical Bornean Ground Cuckoo, Orangutan, Maroon Langur (Red Leaf Monkey) and Pig-tailed Macaque.

TOUR GRADING & KEY

Overall Ease	■ ■ ■	Moderate. This tour has a lot of trail walking and early starts. Not suitable for anyone with mobility or health challenges.
Birding Ease	■ ■ ■	Bird density can be low. Several difficult target species, many skulking understorey species that require sitting/standing for periods of time to observe.
Accommodation	■ ■ ■	Comfortable to very comfortable.
Walking / Trails	■ ■ ■	Some narrow trails, many trails will be muddy and slippery after rain. Terrain can be uneven with fallen logs, tree stumps or rocks under foot.
Vehicles / Roads	■ ■ ■	Small coach for most of tour, some roads are in poor condition. Open air boat rides.
Photography	■ ■ ■	Average, but tough due to skulking nature of many species. Some dedicated blinds / hides.
Annoyances	■ ■ ■	Hot and very humid in the lowlands. Potential for malaria and dengue, though infection is rare.

FINANCIAL ARRANGEMENTS AND IMPORTANT NOTES

The price for this 7-day birding tour of Borneo is **US\$3,950** per person on a twin/sharing basis based on a minimum of 6 guests.

Single supplement: US\$440

Internal flight cost (Lahad Datu to Kota Kinabalu): roughly **US\$176**. The cost of this flight is not included in the price of the tour. However, Rockjumper will gladly assist you with making this reservation and the final cost of the flight will be added to your invoice.

TOUR INCLUSIONS:

- All meals from breakfast on day 1 to lunch on day 7;
- Bottled drinking water;
- All lodgings;
- All ground & boat transportation during the tour;
- All reserve entrance fees;
- All guiding services;
- Tips for local guides, drivers and services.

TOUR EXCLUSIONS:

- Visa fees;
- ANY flights;
- Any beverages (including mini-bar charges at hotels);
- Optional excursions;
- Special gratuities;
- Telephone calls, laundry and other items of a personal nature.

Single Supplement: The single supplement cost for this tour will be charged if you wish to have single accommodation. If RBL cannot provide you with a rooming partner for these nights although you choose to share, the single supplement will become applicable. We will make all reasonable efforts to ensure that a rooming partner is found if you do wish to share.

Tiping: As noted above, gratuities (drivers, hotel staff, restaurants etc.) are included on this tour. However, this does NOT include your Rockjumper leader/s. If you feel that they have given you excellent service, it is entirely appropriate to tip them at your discretion.

Due to constantly fluctuating exchange rates, we quote our tours in 4 currencies. The tour price is fixed only in the currency printed in bold, and the actual cost in the other currencies listed will be adjusted according to prevailing exchange rates at the time of final invoicing. The same applies to approximate flight and single supplement rates.

Rates are based upon group tariffs; if the tour does not have sufficient registrations, a small group supplement will be offered to confirm the tour.

Tour prices are subject to unforeseen increases in tour related costs and may have to be adjusted as a result. The designated tour leader/s may be changed at short due to unforeseen circumstances.

The itinerary is indicative only. Changes may need to be made to the order in which the tour is conducted, or some of the venues we visit closer to departure. We will attempt to adhere as close to the original program as possible.

- Accommodation throughout the trip is of a generally high standard and the hotels and resorts that we make use of range from comfortable to rather luxurious. There is no camping on this trip.
- It is important for the comfort of your fellow travellers that you do not over-pack. Kindly stick to 20kg (44lb) for check in luggage and 8kg (+-18kg) for hand luggage.
- Fitness: this tour does require a high level of fitness, and participants should be in good general health as most of the birding will be done on foot and may require walking for several hours at a time. Some of these trails can be quite steep and slippery, especially after rain.
- For much of the tour you will be far away from modern medical facilities.

ARRIVAL AND DEPARTURE DETAILS

The tour departs Kota Kinabalu very early on day 1, do ensure that you arrive the day before the tour starts. The tour will conclude after lunch at Kota Kinabalu on day 7.

The above information in respect of arrivals and departures is a guide only. Precise arrival and departure information will be sent to you in your Tour Confirmation package once the tour has been officially confirmed. If you wish to arrive early and/or depart late and would like assistance in this regard, kindly contact the Rockjumper office.

Kuala Lumpur International Airport (IATA: KUL) is the main port of entry, and Kota Kinabalu International Airport (IATA: BKI) is the main point of departure for international flights to Malaysia.

Visa requirements differ by country, nationality of the traveller and duration and purpose of your intended stay. It may be necessary to obtain a visa or an electronic travel authorization in advance of your travel. It is therefore vitally important that you check with your travel agent/consulate/embassy for exact visa requirements. The following website provides detailed information about visa eligibility and assistance with online applications options where viable: [Visa HQ for Travel](#)

DO NOT book any flights until the Rockjumper Team have officially confirmed the tour.